

How to Change the Coordinate System of a TBA

MEPHYSTO mc² 2.0

TBA CONTROL PENDANT T41031

NOTE

Before you are able to measure with a PTW water phantom or another PTW Therapy Beam Analyzer, you need to select the coordinate system corresponding to the device you are using. The coordinate system has to be selected in the MEPHYSTO software as well as on the TBA CONTROL PENDANT.

Should you choose an incorrect device in the MEPHYSTO software, it is possible that a wrong coordinate system is selected and that therefore the movement of the detector may be restricted. To set up the coordinate system correctly, please proceed as follows.

NOTE

This technical note assumes that the MEPHYSTO software is already installed on your PC and that you already have connected your TBA system to the PC.

1 TBA CONTROL PENDANT T41031

1. Turn on the CONTROL UNIT.
2. Take the TBA CONTROL PENDANT and press the **F1/SETUP** button.
3. Select the **Device** option by pressing the **+B** button.
4. Navigate with the **-B** and **+B** buttons to select the device you are using (e.g. MP3).
5. Confirm your selection by pressing the **F2** button. The device in the CONTROL PENDANT is now selected.

NOTE

If you are still using the old CONTROL PENDANT T43165/U200, you need to select the coordinate system for your device by pressing the corresponding key combination. The key combinations are listed on the back of the CONTROL PENDANT (**Selecting...**).

2 MEPHYSTO Software

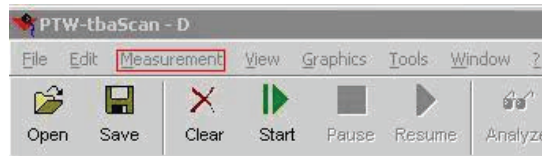
1. Start the MEPHYSTO software on your PC
2. In the MEPHYSTO software, select the device you are using by clicking on the corresponding image. The image will be highlighted (in the example, the MP3 water phantom was selected).



3. Start **tbaScan** by clicking on the corresponding icon.



- In the **tbaScan** window, select **Measurement** → **Zero Electrometer**.



After the zero measurement, the Control Pendant should correctly display all coordinates. Your coordinate system is now set up.

3 How to Reset the Control Unit

NOTE

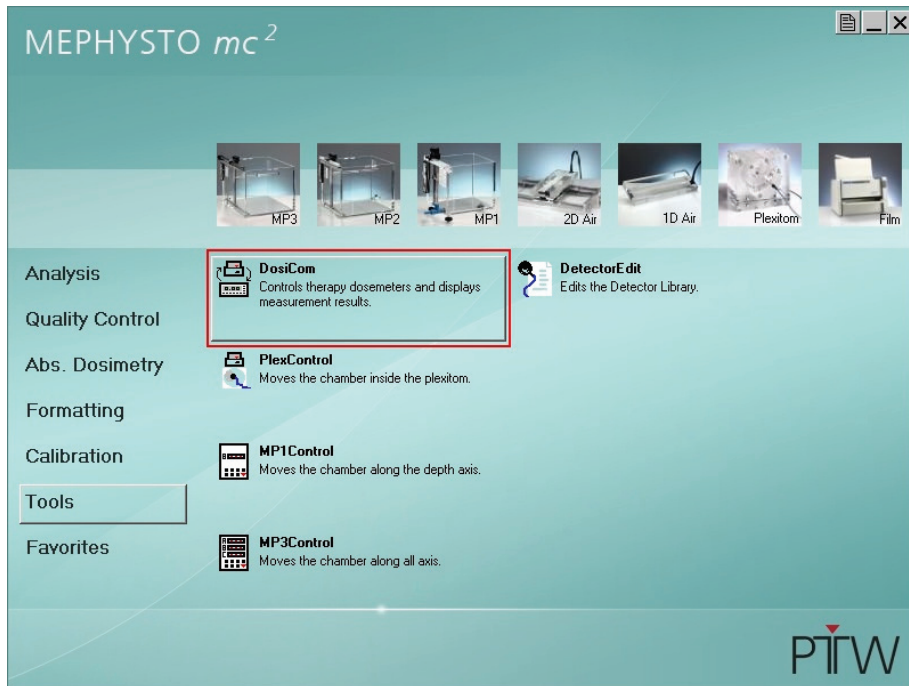
If you followed the steps in chapter 1 and 2, but your Control Pendant still does not show the correct number of coordinates, or if the movement of the detector is still restricted, you can reset the Control Unit to factory default to solve the problem.

Please note that you will have to set zero point and limits again after resetting the Control Unit.

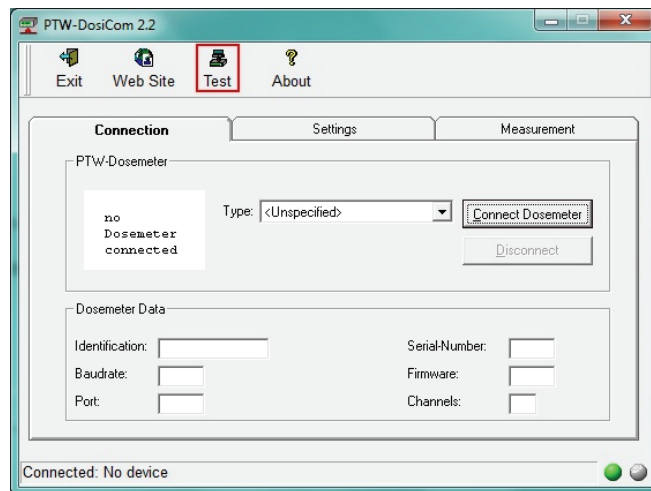
- Before you reset the Control Unit, connect the Control Pendant to the distribution box and move the detector back to the mechanical reference point.
- Close **tbaScan** if it is still open.
- In the MEPHYSTO software, select **Tools** in the menu on the left:



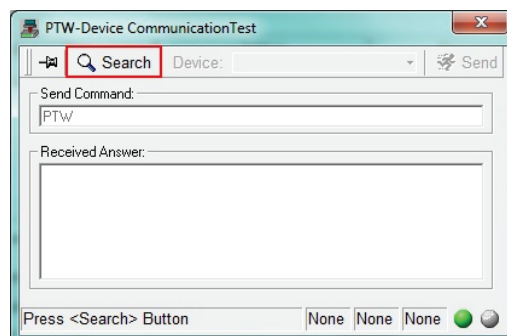
4. Open the program DOSICOM by clicking on the corresponding icon:



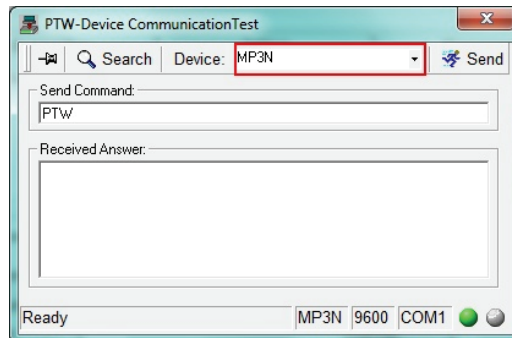
5. In DOSICOM, click on the **Test** icon in the menu bar.



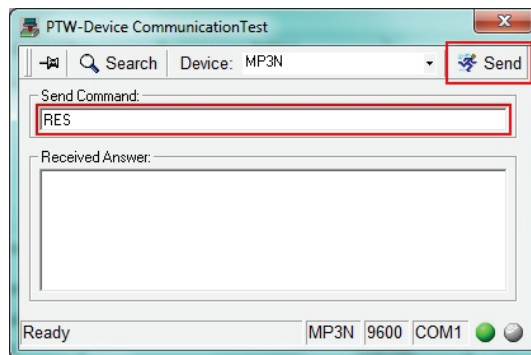
6. The **PTW-Device CommunicationTest** window will open. Click on **Search**.



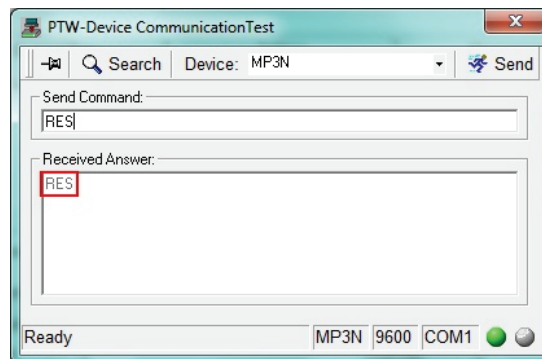
7. Once the search is completed, select **MP3N** as device:



8. Type “RES” in the **Send Command** panel and click the **Send** key in the top right corner:



9. The answer you receive should also be “RES”:



10. Turn the Control Unit off, wait 10 seconds, and turn it on again. The Control Unit is now reset to factory defaults.

11. Close the program and perform the steps in chapter 1 and chapter 2 of this document to set up the correct coordinate system for your device. Remember that you will also have to set zero point and limits again.